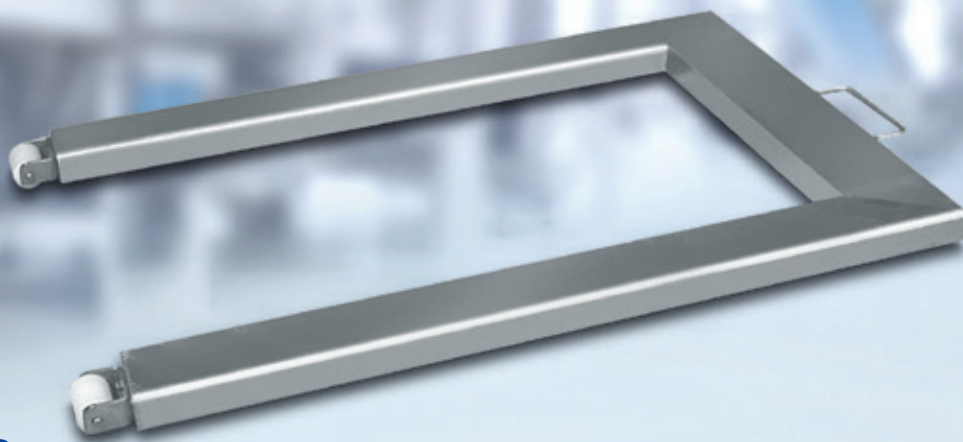


## Pallet scale IU

Tailor-made solutions for challenging weighing tasks



Explosion protection



German Quality

*In order to offer individual weighing solutions at any time for the most varied of industry requirements – for example, also for hazardous areas – the IU pallet scale is available in 48 basic models. A comprehensive selection of additional options, such as sheet inserts and additional columns, rounds off the series.*

The right solution for all of these applications:



Weighing



Counting



Filling and dosing



Formulation



Fill quantity control



Classification

## Technical specifications

### General technical data for pallet scale IUS4/IUG4/IUXS4

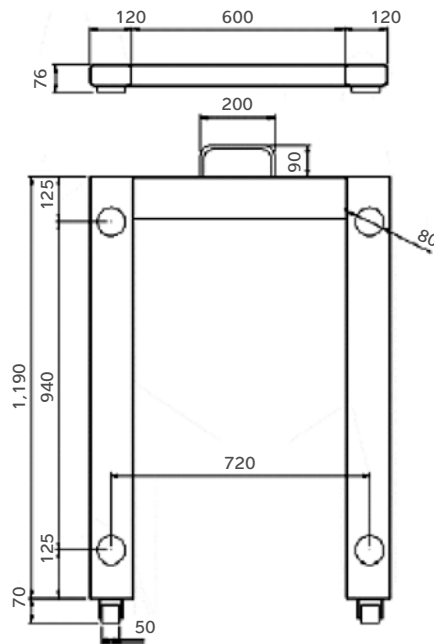
Parameters	Description
Material	IUS4: stainless steel 1.4301/AISI 304 IUG4: galvanised steel IUXS4: stainless steel 1.4301/AISI 304
Miscellaneous	4× height-adjustable feet Grip and two rollers Levelling equipment
Operating temperature range accuracy class III	-10 ... +40 °C
Operating temperature range not verified	-10 ... +40 °C
Storage temperature range	-10 ... +40 °C
Resolution (non-verifiable)	Up to 30,000 d, depending on model
Resolution (verifiable, class III)	Up to 2 × 3,000 e, depending on model
Weighing system	Four C3 load cells
IP protection class	IUS4: IP 67/68, optional IP69K IUG4: IP 65 IUXS4: IP 68
Max. load bearing capacity	3,000 kg
Net/gross weight	35/90 kg
Platform dimensions (W×D)	1,190×840 mm
Connection cable length	6 m

### Pallet scale IU...

Order reference	Load range	Readability in g				Weighing platform dimensions A×B in mm	Load plate material	Weighing platform cable
		-L	-I	-LCE	-NCE			
IUG4-300NI	300 kg	20	10	100	50/100	1,190×840	Galvanised steel	6 m
IUG4-600NI	600 kg	50	20	200	100/200	1,190×840	Galvanised steel	6 m
IUG4-1500NI	1,500 kg	100	50	500	200/500	1,190×840	Galvanised steel	6 m
IUG4-3000NI	3,000 kg	200	100	1,000	500/1,000	1,190×840	Galvanised steel	6 m
IUS4-300NI	300 kg	20	10	100	50/100	1,190×840	Stainless steel	6 m
IUS4-600NI	600 kg	50	20	200	100/200	1,190×840	Stainless steel	6 m
IUS4-1500NI	1,500 kg	100	50	500	200/500	1,190×840	Stainless steel	6 m
IUS4-3000NI	3,000 kg	200	100	1,000	500/1,000	1,190×840	Stainless steel	6 m
IUXS4-300NI	300 kg	20	10	100	50/100	1,190×840	Stainless steel	6 m
IUXS4-600NI	600 kg	50	20	200	100/200	1,190×840	Stainless steel	6 m
IUXS4-1500NI	1,500 kg	100	50	500	200/500	1,190×840	Stainless steel	6 m
IUXS4-3000NI	3,000 kg	200	100	1,000	500/1,000	1,190×840	Stainless steel	6 m

## Technical diagrams

### Pallet scale IUS4/IUG4/IUXS4



The technical data given serves as a product description only and should not be understood as guaranteed properties in the legal sense.

All dimensions in mm

## Options

The choice of different options enables the scale to be customised.

If the option code is given when ordering, the scale will be delivered with the desired features (retrofitting of options is possible by ordering the relevant accessories).

### Certificates for pallet scales IUS4/IUG4/IUXS4

Description	Order number
Certificate of surface roughness*	Z1
Certificate of materials*	Z2
Test report/certificate	Z3

\* for IUS4/IUXS4

### IUS4 options – miscellaneous

Description	Order number
IP69K kit	L6

### Options for IUS4/IUG4

Description	Order number
Suitable for use in zones 2 and 22 (ATEX-labelling: II 3 GD EEx nR II T6 T80°C)	Y2

### Options for IUS4/IUXS4

Description	Order number
1.4301 electropolished stainless steel, type Ra ≤ 0.8 μ	R6
1.4404 electropolished stainless steel, type Ra ≤ 0.8 μ	R2

## Accessories/add-ons

Pallet scales	
Description	Order number
Sheet insert for max. load range up to 600 kg (galvanised)	YTP01IU
Sheet insert for max. load range up to 600 kg (blasted stainless steel)	YTP02IU



Explosion protection

## Ex solutions

### Ex application areas for pallet scale IUG4.../IUS4... with option Y2

Zone	Labelling
2	ATEX: II 3G Ex nA IIC T6 Gc
22	ATEX: II 3D Ex tc IIIC T80°C Dc

### Ex application areas for pallet scale IUXS4...

Zone	Labelling
1	ATEX: (II 2 G) EEx ib IIC T4 USA (FM): IS CL I, II, III, DIV 1, 2, GP A,B,C,D,E,F,G T4 CL I, zone 1, AEx ib IIC T4 CL II, zone 20 Canada (CSA): Ex ia CL I,II,III, DIV 1, 2, GP A,B,C,D,E,F,G T4 zone 1, Ex ib IIC T4 zone 20 DIV 2: Ta = 50°C
21	ATEX: (II 1D) T155°C

## Ordering information

### Ordering system legend for pallet scales IU

Product range	Explosion protection	Material/Version	Number of load cells		Weighing range (kg)	Platform dimensions in mm/order code		Display resolution
IU	X	G	4	-	300	NI	-	L
		S			600			I
					1,500			LCE
					3,000			NCE

G = galvanised, S = stainless steel

### Example order code IUG4-600NI-L:

Part 1: IUG4	Part 2: -600NI	-L
	Weighing platform: 600 kg, L = 1,190 mm × W = 840 mm	Resolution: 50 g readability, non-verifiable

Resolution (depending on readability)	
-NCE	2 × 3,000 e, verifiable divisions, multi-range, fixed fine control range
-LCE	3000 e, verifiable divisions
-I	30,000 d, divisions
-L	15,000 d, divisions

The products and solutions presented in this data sheet make major contributions in the following sectors:



The technical data given serves as a product description only and should not be understood as guaranteed properties in the legal sense.

Specifications subject to change without notice.  
Rev. 08/2018

Minebea Intec Bovenden GmbH & Co. KG  
Leinetal 2  
37120 Bovenden, Germany  
Phone +49.551.309.83.0  
sales.industry@minebea-intec.com  
www.minebea-intec.com