

Sartorius Susceptometer

Model YSZ01C | YSZ02C



Benefits

The susceptometer measures the susceptibility and magnetization of weights of accuracy classes E1, E2, F1 and F2.

With a convenient turning mechanism for the internal neodymium-boron-iron magnet with a dipole moment of approx. 0.1 Am^2 ; distances Z0 between the center points of the weight and magnet:

- Z0 = distance, Class, Field strength
- Z1 = 18 mm, E1, 2700 A/m
- Z2 = 20 mm, E1, 2000 A/m
- Z3 = 27 mm, E2, 800 A/m
- Z4 = 35 mm, E2, 360 A/m
- Z5 = 43 mm, F1, F2, 200 A/m

Technical Specifications

Model	YSZ01C	YSZ02C
Maximum capacity	50 kg	50 kg
Application range	2 g - 50 kg	2 g - 50 kg
Readability	10 µg	1 µg
Repeatability, s*	20 µg	8 µg
Repeatability (typical), s*	10 µg	5 µg
Electronic weighing range and taring range	10 g	10 g
Linearity	0.1 mg	0.05 mg
Range sensitivity	20 µg/1 g	10 µg/1 g
Stabilization time	15 s	15 s

Basic Equipment

	YSZ01C	YSZ02C
Interfaces	RS232	RS232
Draft shield	x	x
PC software	x	x
Test certificate	Sartorius	Sartorius
PC connecting cable	x	x

Ambient Conditions

	YSZ01C	YSZ02C
Permissible operating temperature range	17 - 27 °C	17 - 27 °C
Recommended operating temperature	22 °C	22 °C
Temperature fluctuation	0.3 °C/h 0.5 °C/12 h	0.3 °C/h 0.5 °C/12 h
Max. air movement	< 0.2 m/s	< 0.2 m/s
Humidity range	40 - 60%	40 - 60%
Humidity fluctuation	5%/4 h	5%/4 h
Power supply	100 - 240V AC 50 - 60 Hz	100 - 240V AC 50 - 60 Hz
Power consumption	< 35 VA	< 35 VA

Model	YSZ01C	YSZ02C
Dimensions		
Sample size (D × H)	280 × 300 mm	280 × 300 mm
External dimensions (W × D × H)	338 × 286 × 249 mm	338 × 286 × 249 mm
Net weight	20 kg	20 kg
Gross weight	26.4 kg	26.4 kg
Number of packages	1	1
Packing data	59 × 47 × 75 cm	59 × 47 × 75 cm

Applications

Model	YSZ01C	YSZ02C
OIML R111	E2 F1 F2 M1	E1 E2 F1 F2 M1

Optional Accessories

	YSZ01C	YSZ02C
External calibration weight	10 g E2 YCW412-02	10 g E2 YCW412-02
Weighing table	YWT03	YWT03
Crane with chain hoist	YLD01C	YLD01C
Gripper for weights with handle	YLD02C	YLD02C
Lifting device for 10 kg	YAW51	YAW51
Lifting device for 20 kg	YAW52	YAW52
Lifting device for 50 kg	YAW53	YAW53
1 kg PTB susceptibility reference	YSZ01RSC	YSZ01RSC
Magnet calibration set for susceptometer	YSZ01RMC	YSZ01RMC

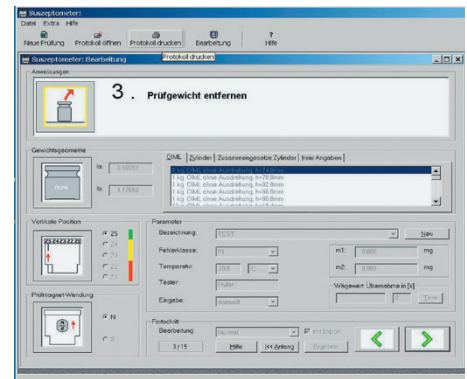
* The typical standard deviation "s" is the repeatability, calculated from 6 ABBA-cycles, after elimination of the drift. Prerequisites for the standard deviation are good climatic conditions in accordance with OIML R111 for an E1 mass laboratory.



YSZ01RMC



YSZ01RSC




YSZ01C | YSZ02C

Germany

Sartorius Lab Instruments GmbH & Co. KG
Otto-Brenner-Strasse 20
37079 Goettingen
Phone +49 551 308 0

USA

Sartorius Corporation
565 Johnson Avenue
Bohemia, NY 11716
Phone +1 631 254 4249
Toll-free +1 800 635 2906

 For further information, visit
www.sartorius.com